



## BDS™ Demonstration System

### BDS 500-USB-LM 13 - Application Kit

IDesia's BDS500 USB BioDynamic Signature (BDS™) Reader provides you with the latest in biometric technology identification / verification systems.

Utilizing IDesia's patented BDS™ technology, the **BDS500** captures your electro dynamic signature and provides unparalleled security and convenience.

#### EASY TO USE:

Fully automatic operation. Gently place any two fingers from both hands, one on each contact sensor for just a few seconds.

#### PRODUCT FEATURES:

The world's first BioDynamic Signature identification device. State-of-the-art electronics inside a stylish looking palm-sized device protecting you and your data.

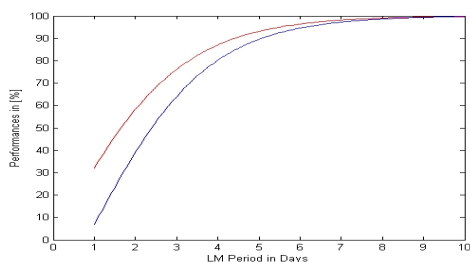
#### LM Demo

Enhance your BDS™ performance with a short Learning Mode period - an easy way to optimize fine-tuning between your characteristics and the BDS™ system.

Set up your LM period according to your convenience and security needs.

	FAR	FRR	Duration
Low	3%	0.5%	2-3 sec
Medium	1%	1%	2-4 sec
High	0.2%	3%	3-5 sec

The graph below shows increasing performance during learning period to reach parameter values as in above table.



USB interface supports plug-and-play operation.

Highly durable sensors provide optimal performance in all working conditions.

Integrated quality control feedback on signal acquisition and finger placement.

IDesia's BDS™ engine is the only biometric technology that gives you enhanced performance with longer touch time.

### Product specifications:



#### Verification Mode (1:1):

Enroll Time: up to 3x10 seconds  
Average Verification Time: 2-4 seconds  
(LM EER) Equal Error Rate (FAR=FRR): 0.1%

**FRR / FAR** are fully adjustable through software.  
**Template size:** 240 byte

#### System requirements:

Microsoft Windows XP

#### Dimensions:

Radius: 95 mm  
Max Height: 17 mm  
Weight: < 120 gram

#### Biometric sensor :

BDS® 500 signal acquisition sensor  
(DA200 v 105)

#### Software :

Visual and audio/speech interaction

#### Interface :

USB 6 foot cable.  
Connects directly to PC/Laptop/HUB.

#### Power Supply:

Grounded adaptor / battery operation

#### Learning Mode:

Real-life operation  
At least one login attempt per day during learning phase

#### RF:

No RF shielding

#### Security Settings:

High security disabled in demo version

#### Light Indicators:

- Red LED - On
- Green LED - in process

#### Maintenance:

Clean with alcohol based wipes every 6 months.